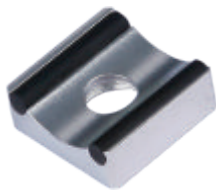
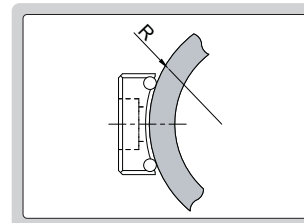


SUORTES DE APOIO PARA DURÔMETROS PORTÁTEIS

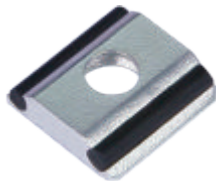
tipo A



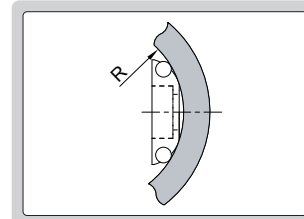
ISH-R1015



tipo B



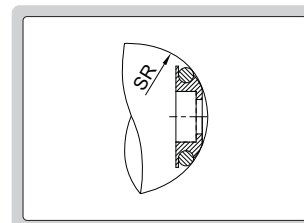
ISH-R1113



tipo C



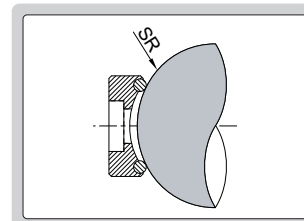
ISH-SR1113



tipo D



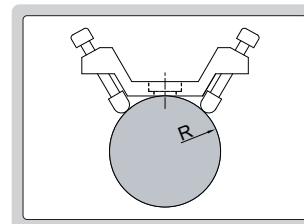
ISH-SR1015



tipo E



ISH-RUN



ESPECIFICAÇÕES

Código	Tipo	Aplicação em peças:	Capacidade (mm)
ISH-R1015	A	Superfície cilíndrica externa	R10 - 15
ISH-R14530			R14.5 - 30
ISH-R2550			R25 - 50
ISH-R1113	B	Superfície cilíndrica interna	R11 - 13
ISH-R12517			R12.5 - 17
ISH-R16530			R16.5 - 30
ISH-SR1113	C	Superfície esférica externa	SR11 - 13
ISH-SR12517			SR12.5 - 17
ISH-SR16530			SR16.5 - 30
ISH-SR1015	D	Superfície esférica interna	SR10 - 15
ISH-SR14530			SR14.5 - 30
ISH-RUN	E	Superfície cilíndrica externa	R > 10